

**APA079Ra61 100µg**

**Active Interleukin 6 (IL6)**

**Organism Species: Rattus norvegicus (Rat)**

***Instruction manual***

FOR IN VITRO USE AND RESEARCH USE ONLY  
NOT FOR USE IN CLINICAL DIAGNOSTIC PROCEDURES

---

---

1th Edition (Apr, 2016)

## **[ PROPERTIES ]**

**Source:** Eukaryotic expression.

**Host:** 293F cell

**Residues:** Phe25~Thr211

**Tags:** N-terminal His-tag

**Purity:** >95%

**Buffer Formulation:** PBS, pH7.6, containing 5% trehalose.

**Applications:** Cell culture; Activity Assays; In vivo assays.

(May be suitable for use in other assays to be determined by the end user.)

**Predicted isoelectric point:** 7.8

**Predicted Molecular Mass:** 23.3kDa

**Accurate Molecular Mass:** 27kDa as determined by SDS-PAGE reducing conditions.

**Phenomenon explanation:**

The possible reasons that the actual band size differs from the predicted are as follows:

1. Splice variants: Alternative splicing may create different sized proteins from the same gene.
2. Relative charge: The composition of amino acids may affects the charge of the protein.
3. Post-translational modification: Phosphorylation, glycosylation, methylation etc.
4. Post-translation cleavage: Many proteins are synthesized as pro-proteins, and then cleaved to give the active form.
5. Polymerization of the target protein: Dimerization, multimerization etc.

## **[ USAGE ]**

Reconstitute in PBS (pH7.6) to a concentration of 0.1-1.0 mg/mL. Do not vortex.

## **[ STORAGE AND STABILITY ]**

**Storage:** Avoid repeated freeze/thaw cycles.

Store at 2-8°C for one month.

Aliquot and store at -80°C for 12 months.

**Stability Test:** The thermal stability is described by the loss rate. The loss rate was determined by accelerated thermal degradation test, that is, incubate the protein at 37°C for 48h, and no obvious degradation and precipitation were observed. The loss rate is less than 5% within the expiration date under appropriate storage condition.

## **[ SEQUENCE ]**

```
FPTSQV RRGDFTEDTT HMRPVYTTSQ  
VGGLITYVLR EILEMRKELC NGNSDCMNSD DALSENNLKL PEIQRNDGCF  
QTGYNQEICL LKICSGLLEF RFYLEFVKNN LQDNKKDKAR VIQSNTETLV  
HIFKQEIKDS YKIVLPTPTS NALLMEKLES QKEWLRTKTI QLILKALEEF  
LKVTMRSTRQ T
```

## **[ ACTIVITY ]**

Interleukin-6 (IL-6), a pro-inflammatory cytokine and an anti-inflammatory myokine, plays important roles in the acute phase reaction, inflammation, hematopoiesis, bone metabolism, and cancer progression. It has been reported that IL-6 significantly increased the MMP-10 protein level in the human lung cancer A549 cells through the JAK/STAT signaling pathway. Briefly, A549 cells were seeded into 6-well cell culture clusters and allowed to grow to 50-70% confluence, then different concentrations of IL-6 was added. After incubated for 24h, the protein levels of MMP-10 in the cell supernatant were determined by Western blot.

Result: MMP-10 protein level significantly increased in A549 cells due to the stimulation of IL-6, the data was shown in Figure 1.

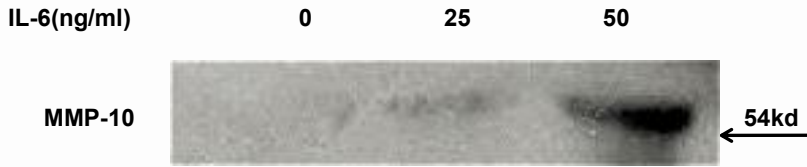


Figure 1. Effect of Rat IL-6 on MMP-10 protein levels.

## [ IDENTIFICATION ]

T T D C T A C T C C A M G T C G A G A G S G A C T T C A G A G A T C C C C A C A C A G C A T A T A C C A C T T C A C A G T G S G A S E C T T A A T T A C A T A T G T C T C G G S A G S C T T G G A A T G A A A G A G T G T G C A A T G E C A A T T C T S A T T G T A T G A C A G C G A T G C A C T G C A C T G T C A G A A A C A A T C T S A M C T T C A G A A  
 F P T S Q V R R G D F T E D T E N R P V Y T T S Q V G S L I T Y V L D R E I L E M R K E L C H O R S D C H S D D A L S E N I L K L F E

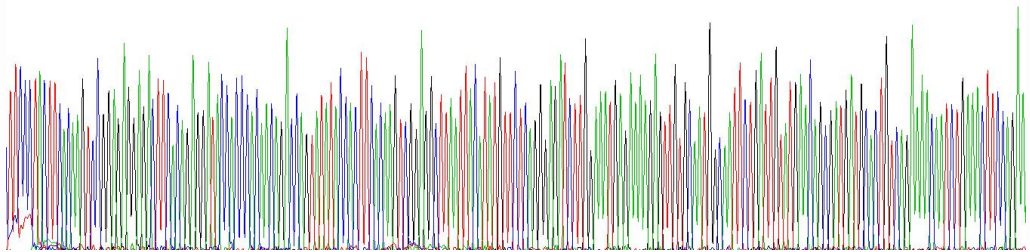


Figure 2. Gene Sequencing (extract)

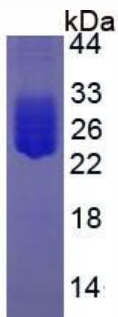
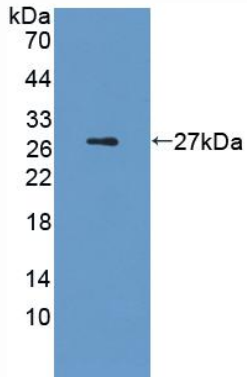


Figure 3. SDS-PAGE

Sample: Active recombinant IL6, Rat



**Figure 4. Western Blot**

**Sample: Recombinant IL6, Rat;**

**Antibody: Rabbit Anti-Rat IL6 Ab (PAA079Ra06)**